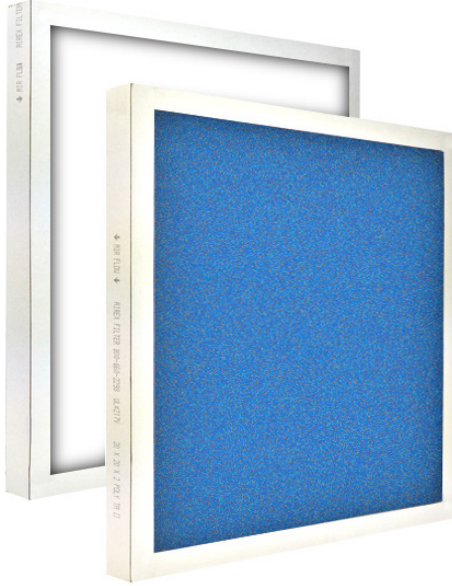


Airex Filter Corporation

Polyester

Disposable Panel Air Filters

**AIREX FILTER**
CORPORATION

The Airex Polyester Filters are manufactured using the highest quality materials available. The filter media consists of Polyester Synthetic Fibers (PSF) dry or tacky produced from 100% high bulk polyester fibers that are thermo bonded with a fire retardant resin. PSF makes an excellent pre-filter for expensive high efficiency and absolute filters. It is extremely resilient and will withstand direct moisture. PSF is an ideal alternative in areas where spun glass is not recommended. The filter media can be treated with an anti-microbial agent when required then enclosed in a heavy duty moisture resistant Kraft board frame, and is available with or without front and back #28 Gage metal retainers securely fastened to the frame to increase overall rigidity of the filter. Beaded hot melt adhesive bonds the entire perimeter of each frame securing the media in the frame when metal is not used. The outer frame indicates size, airflow direction, and the filter's UL Class 2 rating. UL Approved as to flammability 217V Class 2 UL900.

Typical Performance Data

Filter Depth (inches)	Nominal Size (inches)	Capacities (CFM)		Resistance (inches W.G.)			Media (area square foot)	Dust Holding (Capacity/Grams)
		Med.	High	Med.	High	Final		
1"	12x24x1	600	1000	.10	.18	.50	1.88	84 grams
	15x20x1	640	1080	.10	.18	.50	1.96	87 grams
	16x20x1	650	1100	.10	.18	.50	2.10	93 grams
	16x25x1	850	1350	.10	.18	.50	2.64	117 grams
	20x20x1	850	1350	.10	.18	.50	2.64	117 grams
	20x25x1	1050	1750	.10	.18	.50	3.32	146 grams
	24x24x1	1200	2000	.10	.18	.50	3.84	168 grams
2"	12x24x2	600	1000	.09	.16	.50	1.88	120 grams
	16x20x2	650	1100	.09	.16	.50	2.10	133 grams
	16x25x2	850	1350	.09	.16	.50	2.64	167 grams
	20x20x2	850	1350	.09	.16	.50	2.64	167 grams
	20x25x2	1050	1750	.09	.16	.50	3.32	208 grams
	24x24x2	1200	2000	.09	.16	.50	3.84	240 grams

Register today for online ordering:

Shop our full line of commercial filtration products:

www.Airexco.com

- featuring unique volume discounts
- quick re-order from history
- various shipping and payment options

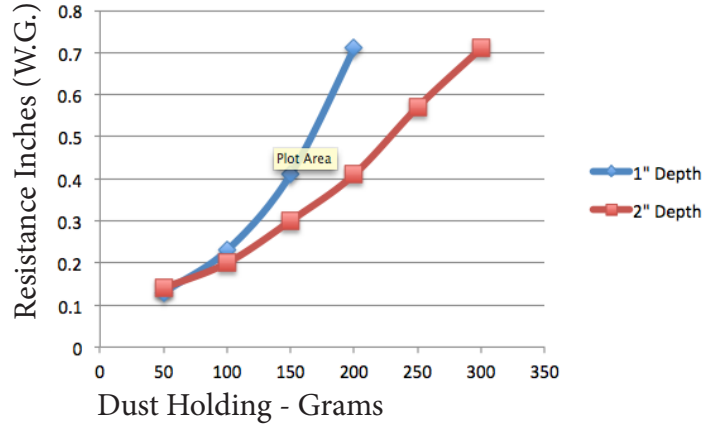
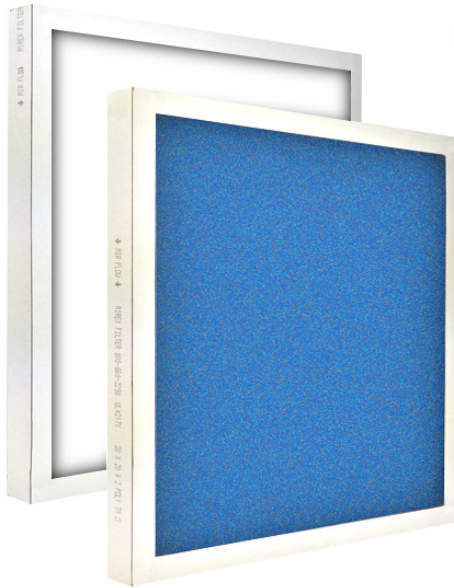
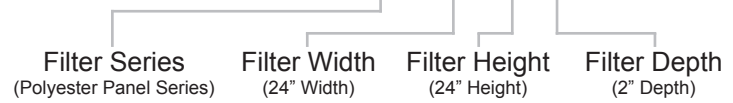
Technical data based on one and two inch dry polyester. Final maximum recommended resistance is .50" W.G. Maximum operating temperature of 180 degrees fahrenheit continuous, 200 degrees fahrenheit intermittent.

For more information, please visit our informational website

www.AirexFilter.com

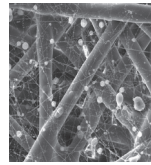
Airex Filter Corporation
Polyester
Disposable Panel Air Filters

example part # **PTA24242**
PTA-24-24-2



Polyester Media

Quality polyester media is manufactured using specially produced developer polyester. The fibers are bonded together to form an interlocking pattern of tiny lint and dust traps. Polyester eliminates the possibility of fibers breaking off and getting into the air stream. A heavy chipboard frame surrounds the polyester media as well as bottlecap on both the air leaving side and air entering side giving extra strength. These filters can withstand temperatures up to 200 degrees F.



- MERV 4-5 performance rating
- Earns LEED Points
- Reduces energy cost
- Extended filter life-cycle
- Conserves resources
- Improves indoor air quality
- Available in 1" and 2" depths
- Special sizes available upon request



Underwriters Laboratories, Inc. (UL) is an agency that lists products they have tested against criteria deemed appropriate for public safety. The classification for HVAC air filters confirms that the filters will meet local and state requirements for most applications.

UL 900 covers both washable and throwaway filters, used for the removal of dust and other airborne particles from mechanically circulated air in equipment and systems. This is in accordance with the Standards of the National Fire Protection Association (NFPA) for Installation of Air Conditioning and Ventilating Systems, of Other Than Residence Type, NFPA No. 90A, and for Installation of Residence Type Warm Air Heating and Air Conditioning Systems, NFPA No. 90B.



**Administrative Office
Manufacturing Plant I**

17 Executive Drive
Hudson, NH 03051
800-660-2298

**Production Office
Manufacturing Plant II**

19 Executive Drive
Hudson, NH 03051
800-660-2298

