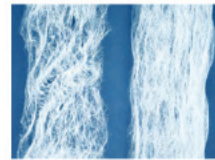


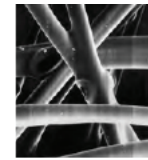
Airex Filter Corporation
Fiberglass Media
 Pads & Rolls - Dry & Tackified



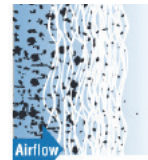
Airex fiberglass pads and rolls are manufactured using the highest quality materials available. The filter media consists of fine threads of glass which are loosely spun on the air entering side and progressively woven tighter on the air exiting side. This design increases dust holding capacity and eliminates the problem of surface loading. Each fiber is treated with a non-odorous, non-migrating adhesive which helps hold dust within the filter, and allows viscous impingement filtration to occur. Airex fiberglass is available in 1/2 inch, 1 inch, and 2 inch thickness in cut pads, rolls, or framed. Merv 4-5 performance rating



Higher fiber content provides more dirt catching media compared to our competitors



Resin applied to the fiberglass during spinning is cured in an oven to form a strong bond at each fiber intersection



Fibers on the air entering side are interlaced in an open pattern which becomes progressively tighter.

Typical Performance Data

| Filter Depth (inches) | Nominal Size (inches) | Capacities (CFM) | | Resistance (inches W.G.) | | | Media Area (per square foot) | Dust Holding Capacity |
|--------------------------|--------------------------|---------------------|------|-----------------------------|------|-------|---------------------------------|--------------------------|
| | | Med. | High | Med. | High | Final | | |
| 1" | 12x24x1 | 600 | 1000 | .09 | .16 | .50 | 1.88 | 105.09 Grams |
| | 15x20x1 | 640 | 1080 | .09 | .16 | .50 | 1.96 | 109.56 Grams |
| | 16x20x1 | 650 | 1100 | .09 | .16 | .50 | 2.10 | 117.39 Grams |
| | 16x25x1 | 850 | 1350 | .09 | .16 | .50 | 2.64 | 147.57 Grams |
| | 20x20x1 | 850 | 1350 | .09 | .16 | .50 | 2.64 | 147.57 Grams |
| | 20x25x1 | 1050 | 1750 | .09 | .16 | .50 | 3.32 | 185.58 Grams |
| | 24x24x1 | 1200 | 2000 | .09 | .16 | .50 | 3.84 | 214.65 Grams |
| 2" | 12x24x2 | 600 | 1000 | .08 | .14 | .50 | 1.88 | 139.12 Grams |
| | 16x20x2 | 650 | 1100 | .08 | .14 | .50 | 2.10 | 155.40 Grams |
| | 16x25x2 | 850 | 1350 | .08 | .14 | .50 | 2.64 | 195.36 Grams |
| | 20x20x2 | 850 | 1350 | .08 | .14 | .50 | 2.64 | 195.36 Grams |
| | 20x25x2 | 1050 | 1750 | .08 | .14 | .50 | 3.32 | 245.68 Grams |
| | 24x24x2 | 1200 | 2000 | .08 | .14 | .50 | 3.84 | 284.16 Grams |

Register today for online ordering:

Shop our full line of commercial filtration products:

www.Airexco.com

- featuring unique volume discounts
- quick re-order from history
- various shipping and payment options

Final maximum recommended resistance is .50" w.g.

*Maximum operating temperature is 180 degrees fahrenheit continuous, 200 degrees fahrenheit intermittent.

For more information, please visit our informational website

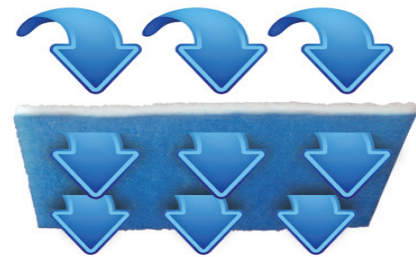
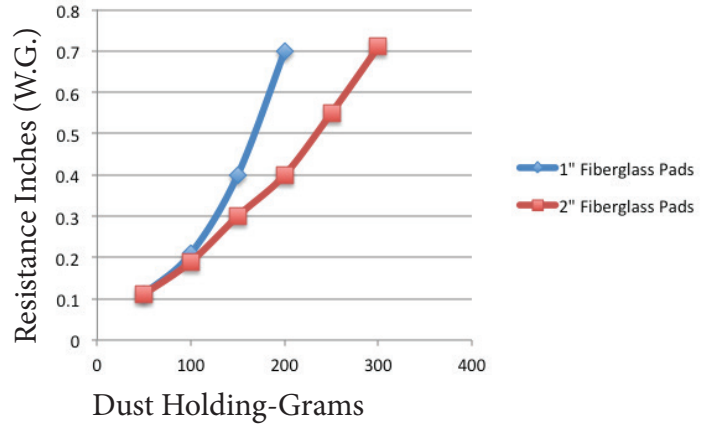
www.AirexFilter.com



Airex Filter Corporation

Fiberglass Media

Pads & Rolls - Dry & Tackified



- MERV 4-5 Performance Rating
- Consistently Highest Quality Available
- Durability - Unaffected by Moisture
- Available in .5", 1" and 2" - Dry or Tackified
- Flame Retarded - U.L. Class 2
- Precise Fiber Blended Media
- Air-laid Web Formation
- Heat Cured for Durability



Underwriters Laboratories, Inc. (UL) is an agency that lists products they have tested against criteria deemed appropriate for public safety. The classification for HVAC air filters confirms that the filters will meet local and state requirements for most applications.

UL 900 covers both washable and throwaway filters, used for the removal of dust and other airborne particles from mechanically circulated air in equipment and systems. This is in accordance with the Standards of the National Fire Protection Association (NFPA) for Installation of Air Conditioning and Ventilating Systems, of Other Than Residence Type, NFPA No. 90A, and for Installation of Residence Type Warm Air Heating and Air Conditioning Systems, NFPA No. 90B.



**Administrative Office
Manufacturing Plant I**

17 Executive Drive
Hudson, NH 03051
800-660-2298

**Production Office
Manufacturing Plant II**

19 Executive Drive
Hudson, NH 03051
800-660-2298

